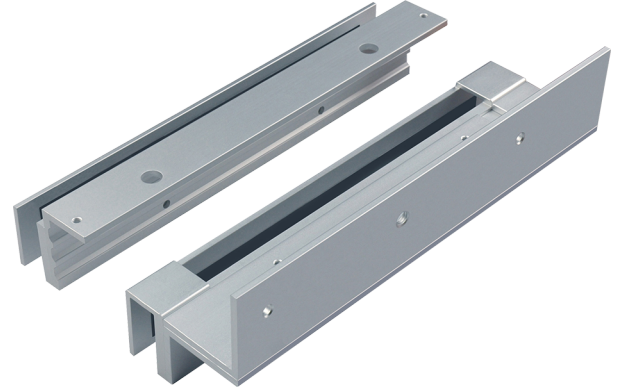


Installation Method

1. Pre-Align the location of the EM Lock to be fixed on the glass frame.
2. Install the VIS-DSU600L on the Glass Door Frame.
 - Put in the AL-Plate and U-rubber in between the glass frame
 - Tighten the M4 Set screws.
3. Install the EM Lock onto VIS-DSU600L using Allen key.
4. Pre-Align the location of the Armature Plate to be fixed on glass door.
5. Install the VIS-DSU600Z on the Glass Door.
 - Put in the AL-Plate and U-rubber in between the glass door.
 - Tighten the M4 Set screws.
6. Install in the Armature Plate by tightening screw M8x16 on the square nut.
 - Put in rubber washer for armature plate flexibility.
7. Slot in the VIS-DSU-Bottom AL Cover into the VIS-DSU600Z.
8. Install the VIS-DSU-Side PP Cover on Left & Right of the VIS-DSU600Z.



Trouble Shooting

1. Sensor not functioning

- Improper attachment of electromagnet and armature plate
- Modification of the PCB

2. Door not locked

- Incorrect wiring or no power from power supply

3. Reduced holding force

- Poor contact of electromagnet and armature.
- Be sure armature is loose enough that it can fully contact electromagnet along the entire length.
- Mating surface is dusty or damaged.
- Improper input voltage or wire size.



General Installation Steps

