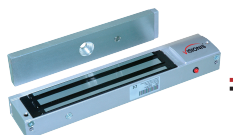


INSTALLATION DIAGRAM FOR ACCESS CONTROLLER, KEYPAD, EXIT BUTTON, WIRELESS RECEIVER AND MAGLOCK KITS

This Diagram is for kits: FPC-7929, FPC-7930, FPC-7931, FPC-7932, FPC-7933, FPC-7934



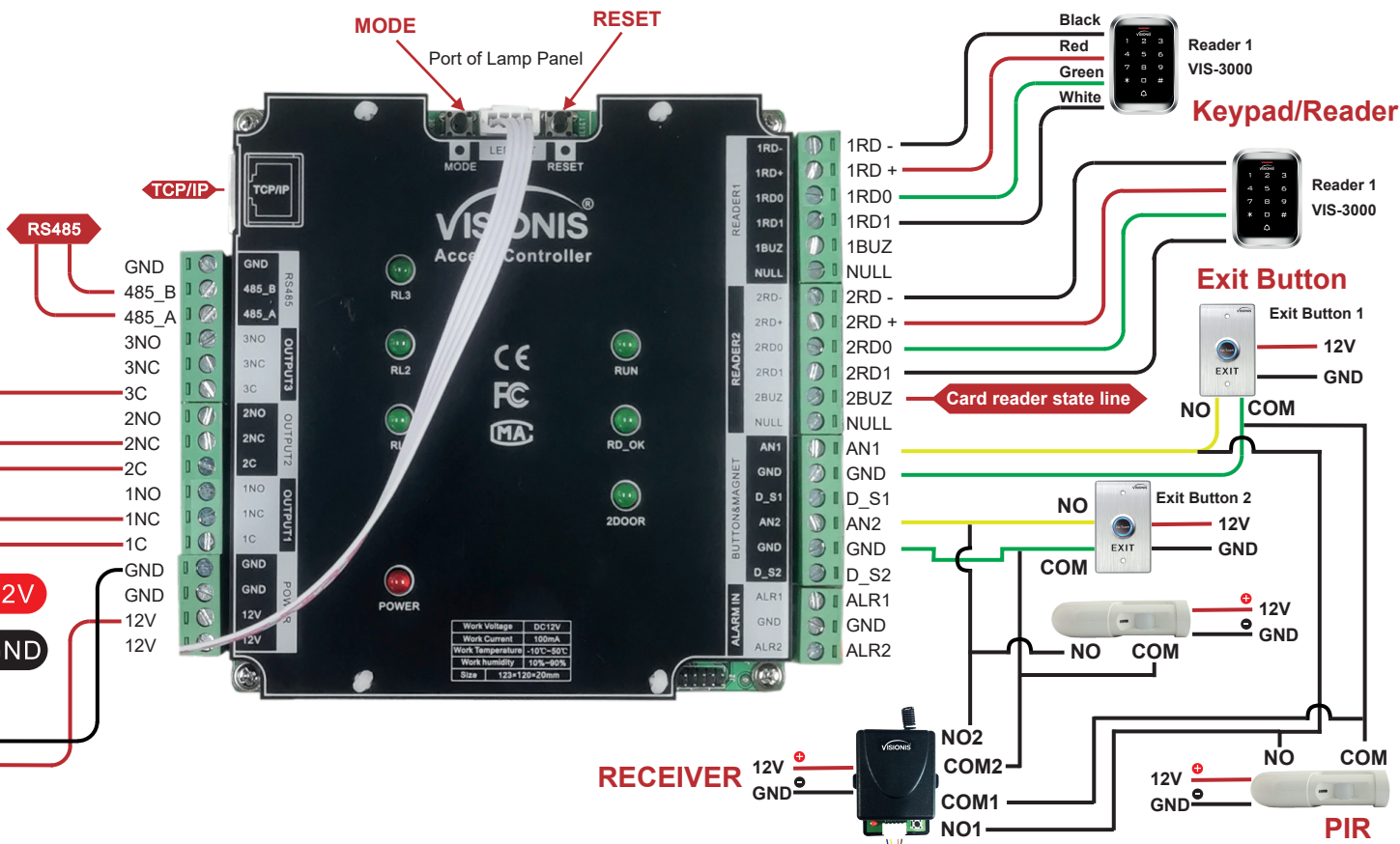
Electromagnetic Lock 2



Electromagnetic Lock 1



Power



ATTENTION! QUICK TIPS, MUST READ BEFORE INSTALLING:

- In order to properly install this kit it is recommended that you use 18/2 or 20/2 gauge wire.
- Before installing this kit, check with your local Fire Authority for the compliance of fire codes.
- In order to locate where you can identify the +, - NC, NO or Open contacts on the exit button please refer to the manual of the exit button.
- We are not responsible for the improper installation of this kit. This is an example of how it should be installed but all applications are different.
- If you are not handy with electrical components, please consult with a certified electrician or Locksmith.
- Make sure that when you are installing this kit, please have all components turned off. We are not responsible for any type of short circuits.
- You will only use the Wires that are displayed on the Diagram, for this application please disregard all other wires.